



\$175,354
Total project cost



\$134,354
CF-LRP funding

\$41,000
co-contribution



42,818
Projected ACCUs

Kunmallup Tree Project

Carbon for Farmers Voucher Program Recipient

Bindi Murray

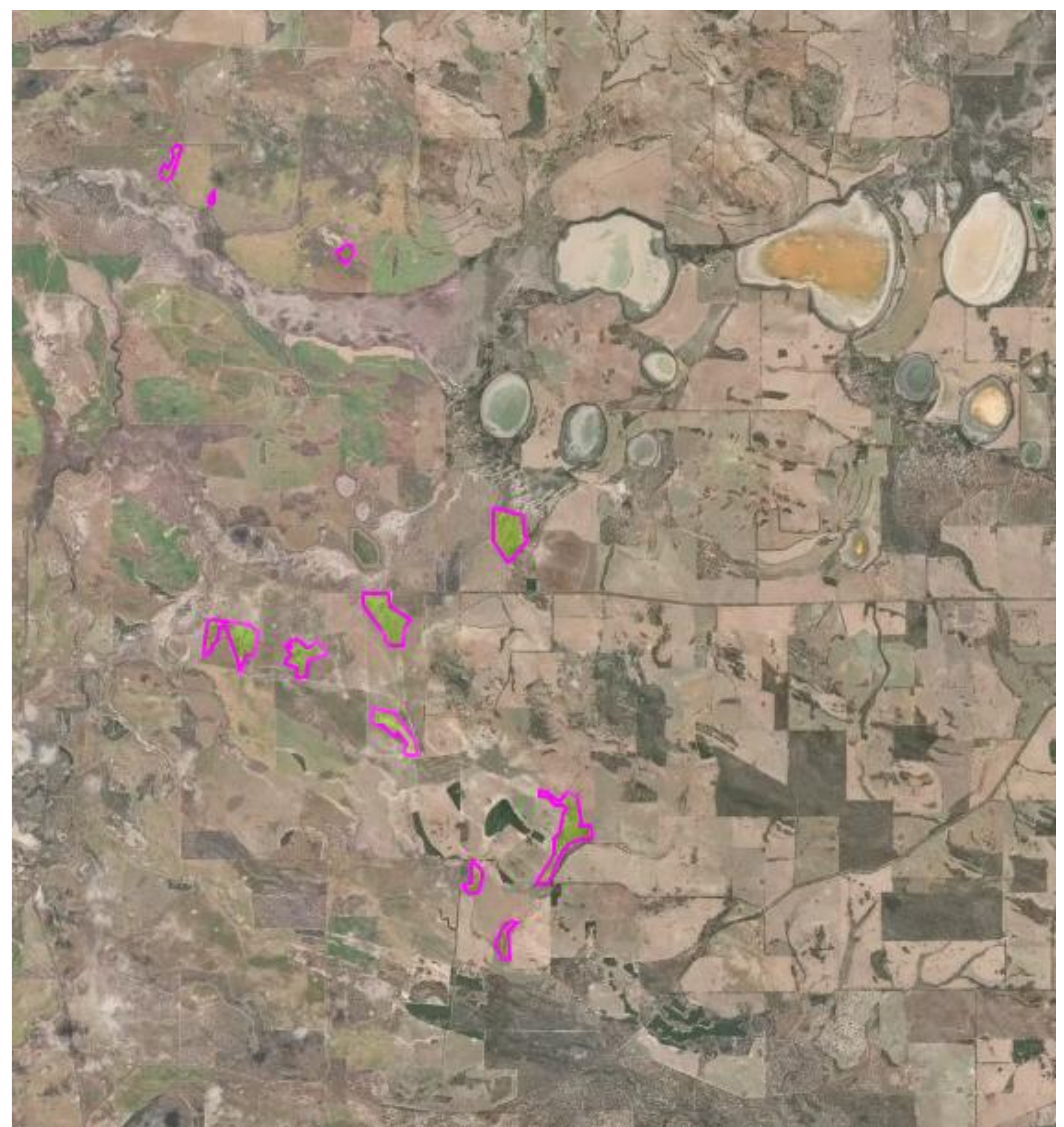
Location	Wagin-Woodanilling, WA	 Agricultural Productivity	 Biodiversity	 Soil Health	 Salinity Mitigation
Project area	232 ha				
Property size	7,343 ha				
Permanence period	25 years				

Aims

- The Kunmallup Tree Project aims to establish permanent biodiverse plantings across 3 farms on areas unsuitable for continuous cropping or grazing. The project demonstrates that carbon farming activities will benefit existing operations by generating ACCUs (carbon credits) as a new income stream, while increasing productivity, biodiversity, and land value.
- The project will facilitate ecological restoration by providing connectivity between areas of remnant vegetation, improving habitat for native flora and fauna, and reduce erosion and stock loss by establishing windbreaks and shelter belts.
- The project site is in an area of high ecological importance which has been historically cleared, leading to hydrological risks. The plantings will help manage naturally saline lake and riparian areas that feed into the Cobline, Carrolup, and Beaufort Rivers, Boyerine Creek, and Norring Lake chain.

Activities

- Establish biodiverse plantings across 232 ha using endemic seedlings and locally sourced seed.
- Site preparation and weed control will be completed prior to the planting program.
- Stock will be excluded from saline and salinity-prone areas to promote regeneration of bushland, protecting waterways and riparian environments.
- Windbreaks and shelter plantings will reduce ground-level wind speed, minimise soil erosion, and improve livestock welfare.
- Biodiversity changes will be monitored with Photomon and satellite imagery.
- Agricultural resilience indicators including lamb survival rates, soil health, and crop production will be monitored alongside salinity and wind speeds to guide ongoing land management decisions.



Above: Satellite view of the proposed project areas and surrounding lake chains