



\$791,903
Total project cost



\$607,750
CF-LRP funding

\$184,153
Co-contribution

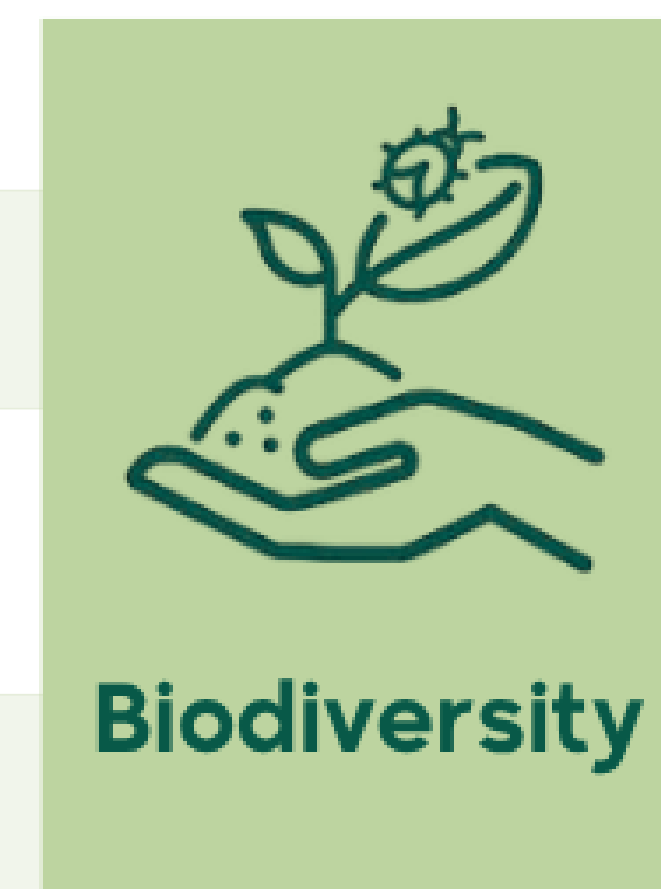


22,100
Projected ACCUs

Tambellup Noongar Farm Carbon Restoration Project

Tambellup Noongar Land Aboriginal Corporation and Threshold Environmental

Location	Tambellup, WA
Project area	130 ha
Property size	1,967 ha
Permanence period	25 years



Biodiversity



Agricultural
Productivity



Soil
Health



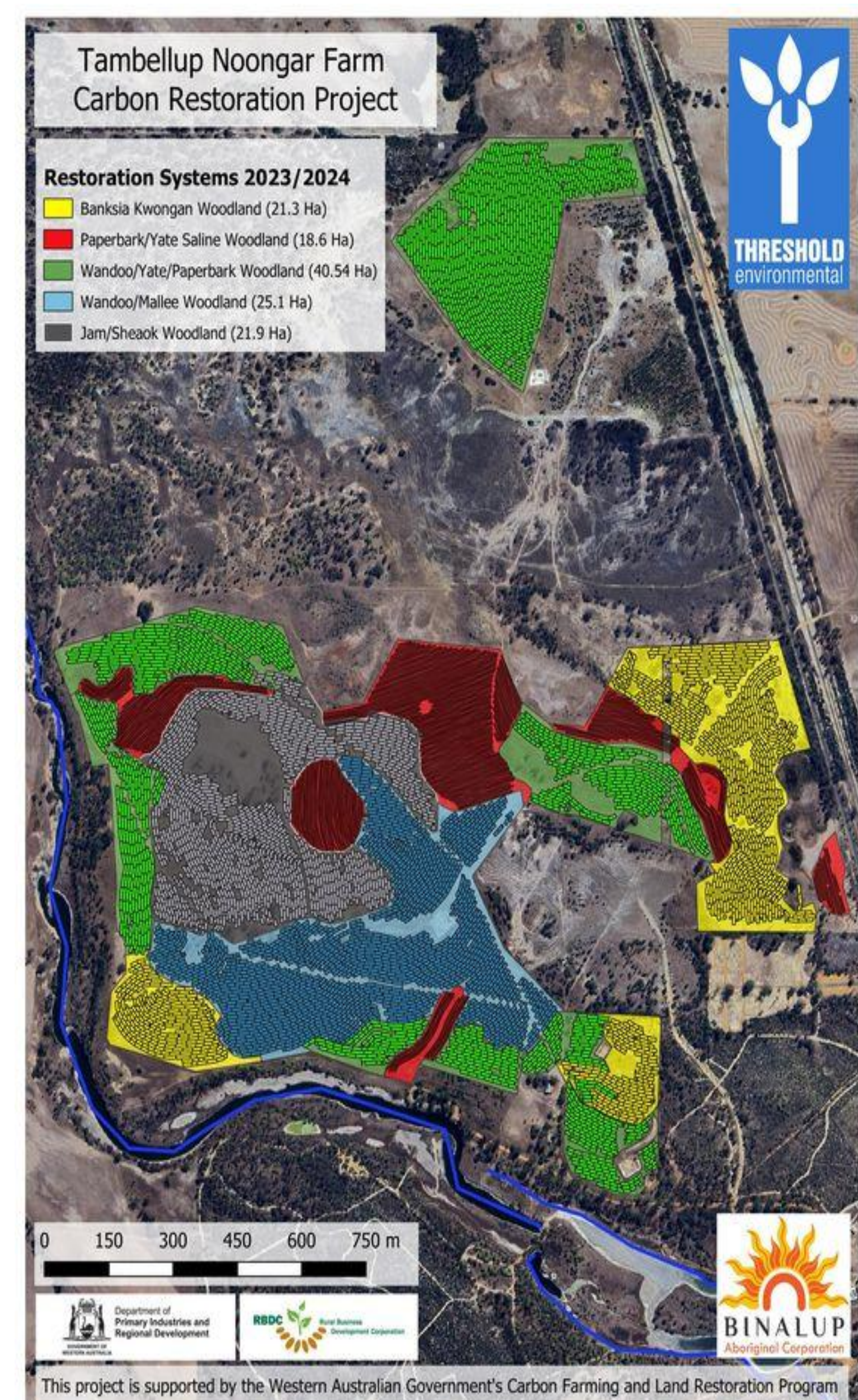
Salinity
Mitigation

Aims

- The collaborative partnership between Tambellup Noongar Farm, Binalup Cultural Rangers and Justin Jonson of Threshold Environmental aims to generate income and ecological restoration and give on Country opportunities to share stories about the land and culture.
- Ecological restoration of 130 ha of marginal, degraded farmland will reconnect high-value remnant vegetation, improve biodiversity and sequester carbon through environmental plantings, restoring ecological balance and mitigating salinity.
- The project will diversify farm income and create employment opportunities for the local Noongar community, and share cultural and environmental knowledge with members of the broader community.
- It will restore native plant communities and reconnect areas of high value remnant vegetation through permanent plantings of biodiverse, endemic species matched to soil types.
- Hands-on training will build the skills to support independent, ongoing operational capacity for the project into the future.

Activities

- Binalup Rangers and Elders assessed and developed the project's restoration. The Rangers completed site preparation and weed control, hand planted the seedlings and spread the seed.
- A combination of hand and machine planted seedlings and 65 kilograms of seed will be used to establish over 60 species of endemic plants over the 130 ha area.
- Different local native plant species were matched to soil type to create individual vegetation communities. Halophytic tree and shrub species have been planted in 3 areas affected by salinity. Adjacent lands were planted with deep rooted native vegetation.
- A 10-year Capacity Building Strategy will support capacity-building and knowledge transfer between Tambellup Noongar Land Aboriginal Corporation, Binalup Aboriginal Rangers and Threshold Environmental with the aim to transfer the project to the TNLAC.
- A Cultural Heritage Survey informs land management and planting placement.



Left: The Tambellup Noongar Farm project will provide connectivity to existing vegetation and the adjacent Gordon River



Above: Project areas planted with soil matched species of local native plants